

The above provides a comprehensive overview of our products. For more information or customized solutions, please feel free to contact us.



YANGZI FLOOR **SPC Flooring Product Brochure**

ANHUI YANGZI FLOORING INCORPORATED COMPANY

Contact Numbers: +86 18916901350 (WhatsApp)

Global Website: <https://ventoce.com> Chinese Website: <https://yzwood.com>

Email: wangjie@yzwood.com

Address: No.98, West Huayuan Road, Economic DevelopmentZone,Chuzhou. Anhui Province. China.



Laminate Product Brochure

1	2	3
Company Introduction	Product Overview	Accessories and Materials
03	05	19

CONTENTS

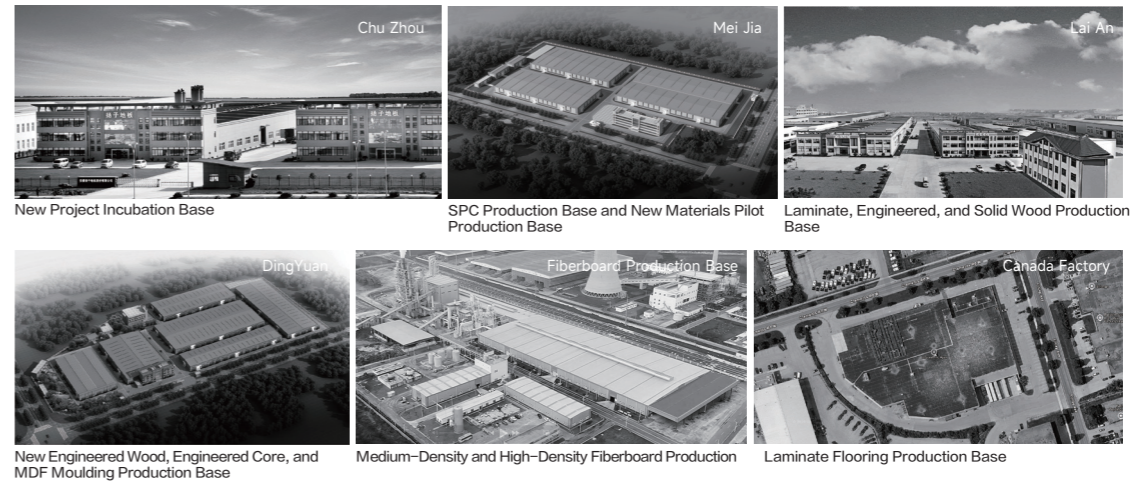


01 Company Introduction

Company Introduction

Since its founding, our company has adhered to a solid foundation of technical expertise and market insight, dedicating itself to the R&D, production, sales, and service of integrated wall and flooring decoration materials. Before the company was officially established in 2002, our founding team had already accumulated nearly 10 years of industry experience, laying a strong foundation for the company's steady development. Over the years, we have quickly expanded globally, establishing six major production bases that cover the entire industrial chain—from raw material procurement to finished product manufacturing—ensuring a balance between production and sales to robustly support exports and sales in global markets.

As a National High-Tech Enterprise, National Intellectual Property Advantage Enterprise, and a Specialized and Innovative "Little Giant" Enterprise, our company continuously optimizes production capacity and product quality, adapting flexibly to market demands and consistently expanding into new markets worldwide. Currently, we have established a solid sales network domestically and internationally, with over 1,000 retail chain stores across China. We have also built strategic partnerships with China's top 20 real estate companies, positioning ourselves as a leading brand in custom flooring and wall and floor decoration materials. Our products are exported worldwide, earning the trust of global customers through exceptional service and high-quality products, and driving steady business growth.





Product Structure

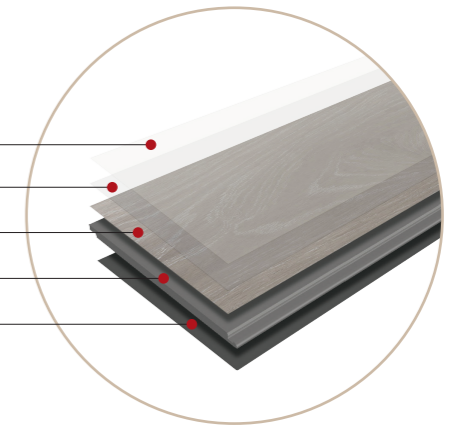
SPC PRESS EDGE + MICRO-FOAMING

- Using micro-foaming technology, this flooring is 20% lighter than standard SPC, making it easier to handle and reducing transportation costs. The synchronized press edge process provides a strong three-dimensional effect and a natural wood look, while the mitered joints enhance durability and stain resistance, making it easy to maintain. The product is environmentally friendly, safe, and 100% waterproof.
- Certifications: CE, Floor Score

02 Product Overview

- ▶ SPC Flooring
- ▶ Pressed Edge SPC Flooring

- Paint layer
- Wear resistant layer
- Color film layer
- Stone plastic substrate layer
- Silent layer



Pressed Edge SPC Flooring

The lightweight SPC pressed Edge flooring uses natural stone powder and polymer materials as main raw materials. Through self-developed lightweight technology and integrated pressing process, it features superior surface wear resistance and a more distinct 3D visual effect. It provides a strong texture and does not contain any harmful substances. Yangzi Flooring's unique lightweight formula and automated edge-pressing technology lead the industry, with core technology patents applied.



Environmental protection



Super waterproof



Silent and damping



Flame retardant and fireproof



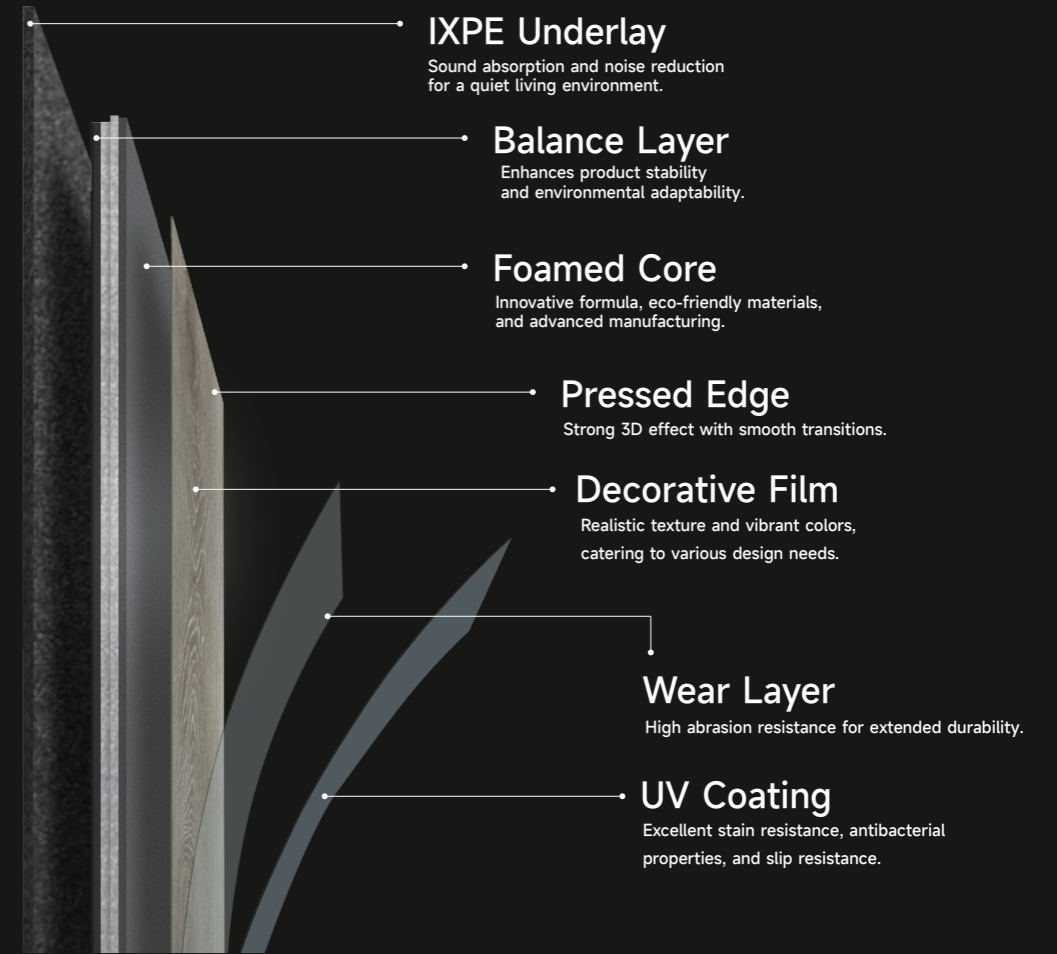
Anti-slip and Better Safety



Practical economy

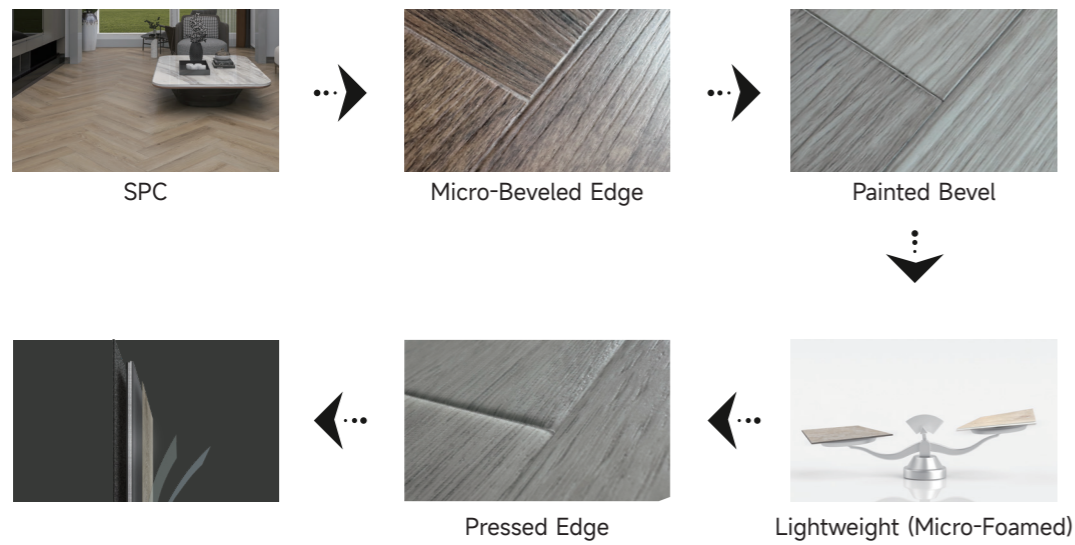


Product Structure



Process Characteristics

Product Process Evolution



Functional Features

- Excellent Waterproof Performance (100% water free)**: A wooden plank is shown being splashed with water.
- Anti-Slip for Wet Areas**: A person's foot is shown stepping on a wet floor.
- Wear and Impact Resistant**: A glass bottle is shown being dropped onto the floor.
- Comfortable Foot Feel**: A person's legs are shown walking on the floor.
- Herringbone with Free-Form Designs**: A close-up of a herringbone pattern.
- Compatible with AB Boards and Random Patterns**: A close-up of a random pattern.

- Product Categories**: Shows SPC Flooring and Micro-Foamed Pressed Flooring.
- Bevel**: Shows Painted Bevel and Pressed Edge options.
- Surface Design Options**: Shows EIR Process and Universal Wood Grain options.

Project Analysis	Traditional SPC	Lightweight SPC
Weight	25-30 KG/Bag	20-25% Lighter
Foot Feel	Harder Feel	Soft and Elastic
Sound Absorption	With Sound Absorption	More Noticeable
Seam Durability	Beveled Joint Paint Peeling	Pressed Durability
Installation Effect	3D Effect	Enhanced 3D Effect

Current SPC Flooring Production Capacity

5 Million m²

54 Million SQFT

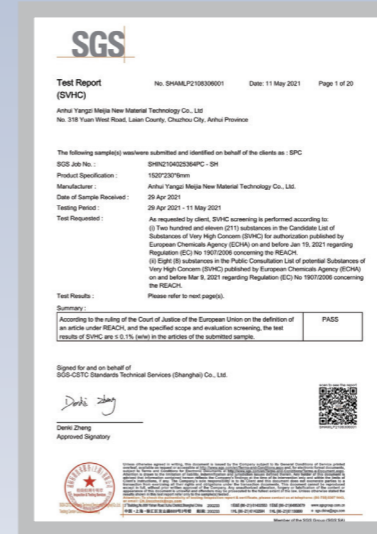


Certifications



FLOOR SCORE

Test Reports



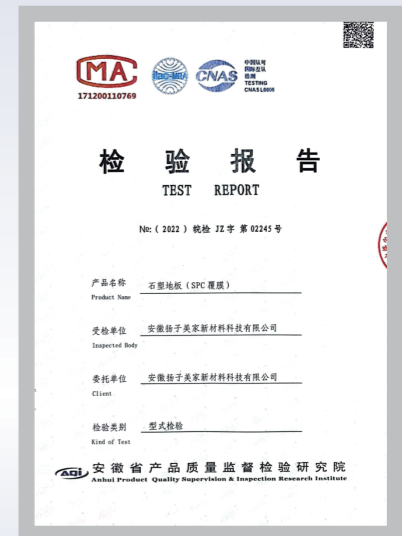
SPC Flooring REACH Test Report



SPC Flooring Phthalate Test Report



SPC Flooring TVOC Test Report



SPC Flooring Type Inspection Report

SPC Collections



Press Edge Collections



Accessories and Materials

SPC Transitions

The SPC moulding collection includes Baseboards, T-Mouldings, Reducers, and Stair Noses, extending the core advantages of SPC flooring, such as excellent water resistance, superior wear resistance, and outstanding stability. These mouldings are designed to enhance the overall decorative effect, ensuring seamless transitions between flooring and walls, thresholds, and other areas, while effectively protecting the edges and prolonging the lifespan of both the flooring and staircases. The Stair Nose is specifically designed for staircase applications, providing added safety by reducing wear and minimizing slip risks. Additionally, the SPC mouldings feature a hollow-core structure, making them lightweight and easy to install while offering enhanced structural stability. All mouldings are crafted with designs that match the color and texture of SPC flooring, ensuring a harmonious look and delivering professional, detailed finishing and protection for any interior space.



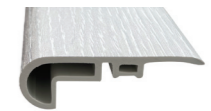
SPC Skirting Board

STYLE	match 4mm-8mm floor
SIZE/PC	2400*80*15mm
CARTON SIZE	2420*165*85mm
PACKING(PCS/CTN)	10
WEIGHT KGS/PC	0.49Kgs/pc



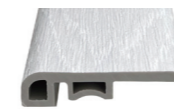
SPC Flush Stairnose

STYLE	match 4mm-5mm floor
SIZE/PC	2400*78*25mm
CARTON SIZE	2420*85*110mm
PACKING(PCS/CTN)	6
WEIGHT KGS/PC	2.2Kgs/pc



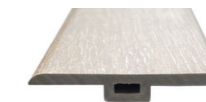
SPC Stairnose Overlap

STYLE	match 4mm-8mm floor
SIZE/PC	2400*55*18mm
CARTON SIZE	2420*110*65mm
PACKING(PCS/CTN)	10
WEIGHT KGS/PC	1.35Kgs/pc



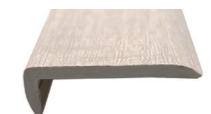
SPC End-cap

STYLE	match 4mm-8mm floor
SIZE/PC	2400*35*9mm
CARTON SIZE	2420*125*85mm
PACKING(PCS/CTN)	25
WEIGHT KGS/PC	0.72Kgs/pc



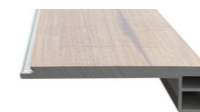
SPC T_Molding

STYLE	match 8mm floor
SIZE/PC	2400*40*11mm
CARTON SIZE	2420*125*85mm
PACKING(PCS/CTN)	25
WEIGHT KGS/PC	0.5Kgs/pc



SPC Square Flush

STYLE	match 5mm-8mm floor
SIZE/PC	2400*110*25mm
CARTON SIZE	2420*125*105mm
PACKING(PCS/CTN)	6
WEIGHT KGS/PC	2.65Kgs/pc



SPC Square Flush

STYLE	match 4mm-8mm floor
SIZE/PC	2400*110*25mm
CARTON SIZE	2420*125*105mm
PACKING(PCS/CTN)	6
WEIGHT KGS/PC	2.95Kgs/pc

Our SPC moulding collection features a wide range of standardized models and designs, characterized by superior water resistance and exceptional stability, making it an ideal choice for various interior applications. Here, we present only a selection of popular designs. Additional specifications and styles are available for flexible combinations, catering to diverse project requirements and ensuring optimal installation results. For more details, please contact us.

WPC Transitions

The WPC moulding range includes Baseboards, T-Mouldings, Reducers, and Stair Noses, showcasing the lightweight, flexibility, and eco-conscious characteristics of WPC flooring. Unlike SPC mouldings, WPC mouldings are designed with a solid-core structure, reducing weight while providing superior shock absorption, making them well-suited for a wide variety of interior settings. These mouldings ensure smooth transitions between flooring and adjacent surfaces like walls and thresholds, offering robust edge protection and extending the lifespan of the flooring and stairs. The Stair Nose enhances comfort underfoot and adds a layer of safety to stair applications. With precise color and pattern alignment, WPC mouldings blend seamlessly with the flooring, delivering a cohesive look that complements diverse interior styles and providing meticulous finishing and comprehensive edge protection.



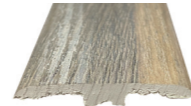
WPC Flush Stairnose

STYLE	match 6.5mm/8mm floor
SIZE/PC	2400*110*25mm
CARTON SIZE	2420*125*105mm
PACKING(PCS/CTN)	6
WEIGHT KGS/PC	2.48Kgs/pc



WPC Quarter round

STYLE	match 6.5mm/8mm floor
SIZE/PC	2400*25*15mm
CARTON SIZE	2420*115*105mm
PACKING(PCS/CTN)	25
WEIGHT KGS/PC	0.61Kgs/pc



WPC T-molding

STYLE	match 6.5mm/8mm floor
SIZE/PC	2400*45*8mm
CARTON SIZE	2420*125*85mm
PACKING(PCS/CTN)	25
WEIGHT KGS/PC	0.5Kgs/pc



WPC Reducer

STYLE	match 6.5mm/8mm floor
SIZE/PC	2400*45*9mm
CARTON SIZE	2420*125*85mm
PACKING(PCS/CTN)	25
WEIGHT KGS/PC	0.75Kgs/pc



WPC Scotia

STYLE	match 6.5mm/8mm floor
SIZE/PC	2400*18*15mm
CARTON SIZE	2420*115*105mm
PACKING(PCS/CTN)	25
WEIGHT KGS/PC	0.49Kgs/pc



WPC Stairnose Overlap

STYLE	match 6.5mm/8mm floor
SIZE/PC	2400*55*18mm
CARTON SIZE	2420*110*65mm
PACKING(PCS/CTN)	25
WEIGHT KGS/PC	0.85Kgs/pc

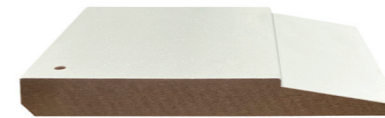
Our WPC moulding collection offers a variety of standardized models and designs, emphasizing the lightweight yet durable characteristics of WPC. Beyond the showcased selection, the series includes additional specifications and styles that can be flexibly adapted and customized to suit different interior design needs. Whether for floor edging, transitions, or stair protection, WPC mouldings provide exceptional finishing and reliable safeguarding for your projects. For further details, please feel free to contact us.

MDF Transitions

Baseboard, Casing, Crown etc.

MDF mouldings are versatile decorative trims designed for interior wall finishing and protection, including baseboards, casings, door stops, and crown moulds. The baseboard series is mainly used for the transition between the wall and the floor, effectively covering gaps, preventing dust accumulation, and adding an elegant finishing touch to the flooring. The casing series is specially designed for window areas, concealing gaps between the window frame and the wall, enhancing the overall aesthetic. The door stop series is used around door frames, providing structural elegance and protecting edges from impact damage. Crown moulds are installed at the junction between walls and ceilings, adding depth and dimension to the space, creating a refined interior atmosphere.

MDF mouldings are made from high-quality materials with a smooth finish, offering excellent wear resistance and moisture protection, ensuring long-lasting decorative appeal. Available in various styles and colors, they cater to diverse interior design needs, creating a cohesive and harmonious look throughout the space.



Bevel Step

LENGTH: 10'
 WIDTH: 7" | 5"
 ITEM CODE: B-03 | B-04



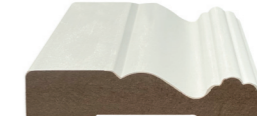
Flat Stock

LENGTH: 12'
 WIDTH: 5" | 7"
 ITEM CODE: B-07 | B-08



Colonial

LENGTH: 10'
 WIDTH: 5" | 4"
 ITEM CODE: B-05 | B-06



Colonial - Casing

LENGTH: 8'7"
 WIDTH: 3-1/2"
 ITEM CODE: C-03 | C-05

We offer a diverse range of MDF mouldings with dozens of model designs, including Baseboards, Casings, and Crowns, to suit various interior decoration needs. For more details, please contact us.